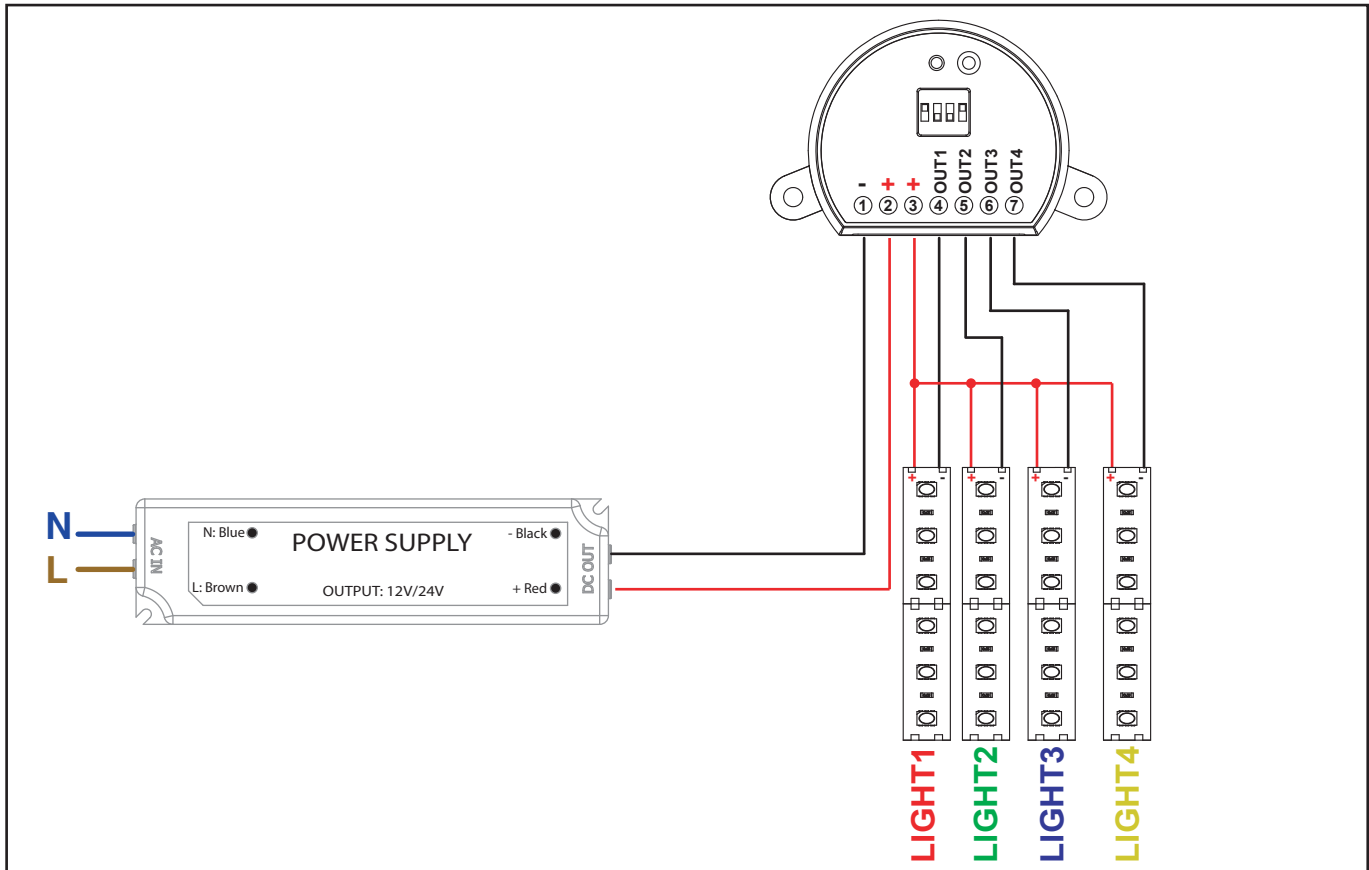


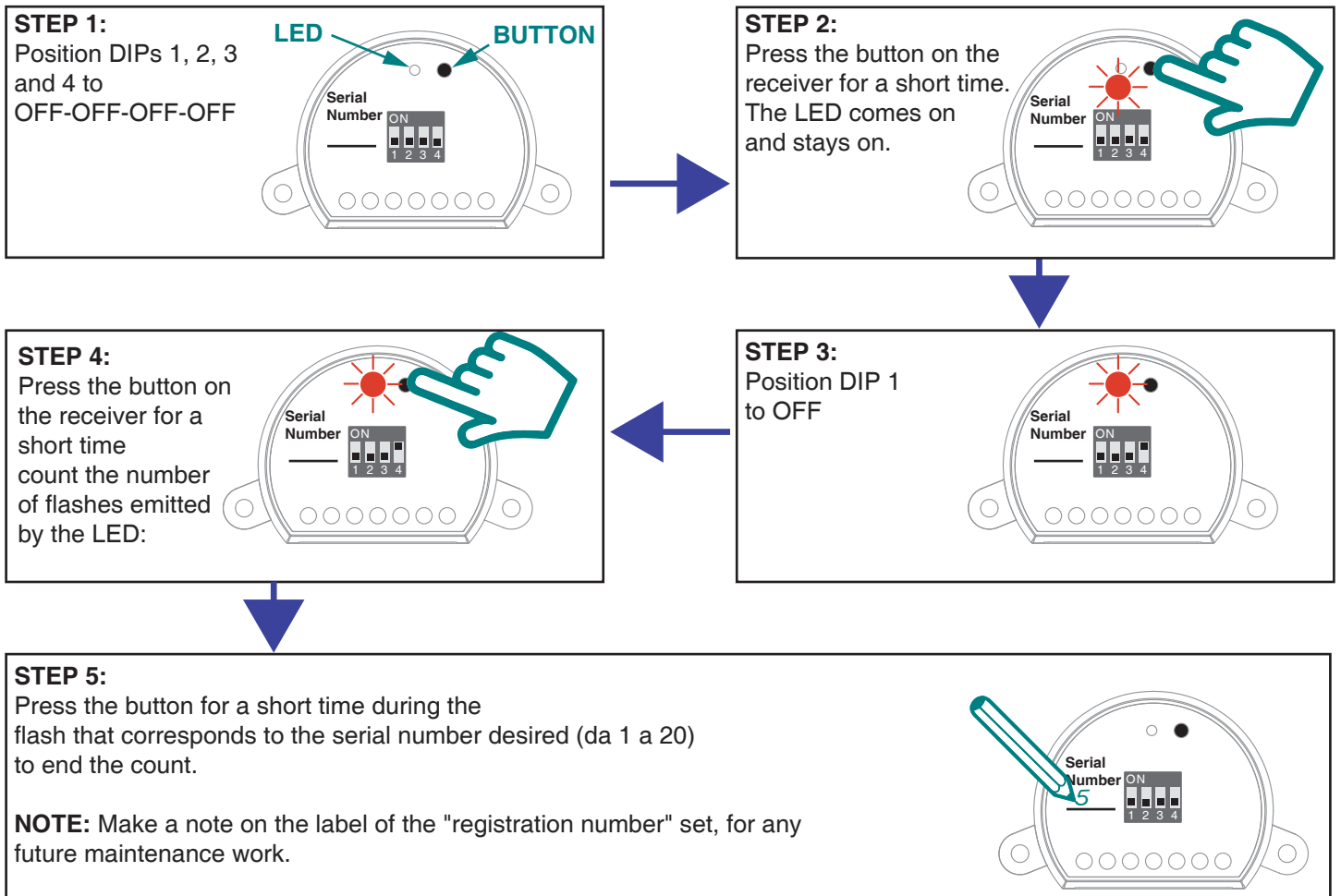
# CONNECTION DIAGRAM



## USE OF THE CONTROL UNIT

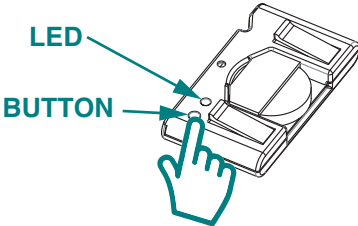
To make the devices work a procedure must be carried out to give the receiver and sensors the same "serial number".

### ENTERING "SERIAL NUMBER" ON RECEIVER



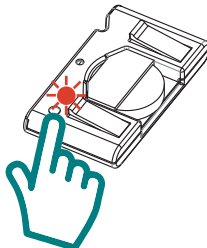
## ENTERING "SERIAL NUMBER" ON SENSOR

**STEP 1:**  
Hold the sensor button down



**STEP 3:**  
The LED stays on in the colour selected.

Press the button on the sensor for a short time and count the number of flashes emitted by the LED.



**STEP 2:**  
The LED comes on and goes through the colours in rotation. Take your finger off the button when the LED comes on in the colour corresponding to the output that the sensor is to be associated with.

**EXAMPLES:**

If you take your finger off on red, the sensor will make LIGHT1 turn on.



If you take your finger off on green, the sensor will make LIGHT2 turn on.



If you take your finger off on blue, the sensor will make LIGHT3 turn on.

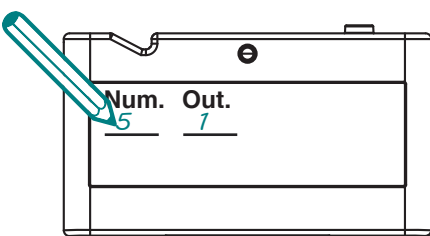


If you take your finger off on yellow, the sensor will make LIGHT4 turn on.



**STEP 4:**  
Press the button on the sensor for a short time during the flash that corresponds to the serial number desired (da 1 a 20) to end the count.

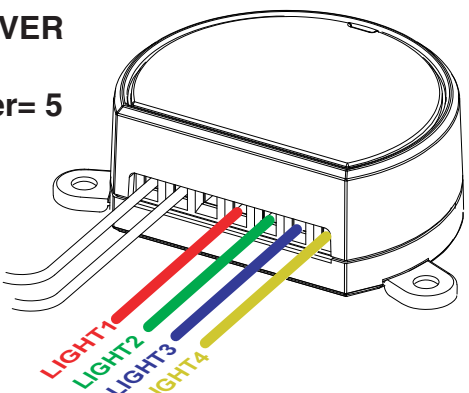
**NOTE:**  
Make a note on the label of the "serial number" set, for any future maintenance work.

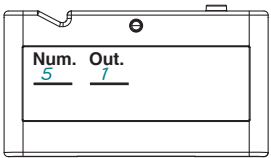
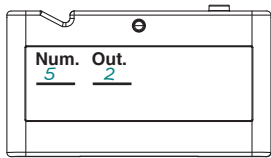
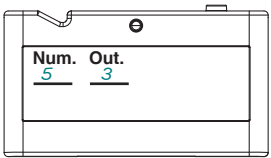


## TYPICAL SYSTEM

For correct operation the receiver and the sensors must have the same "registration number". Each sensor will turn on the light on which it was programmed.

**RECEIVER**  
serial number= 5



<p><b>SENSOR DOOR 1</b></p> 	<p><b>SENSOR DOOR 2</b></p> 
<p><b>SENSOR DOOR 3</b></p> 	<p><b>SENSOR DOOR 4</b></p> 